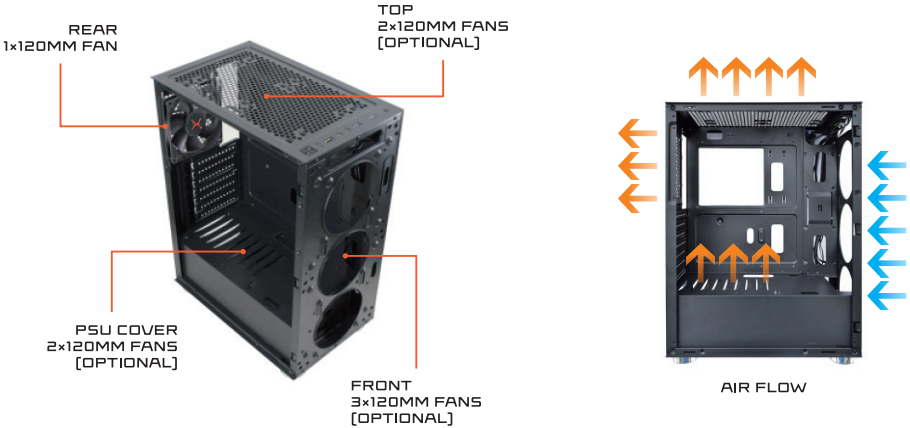




FAN INSTALLATION

OPEN THE LEFT COVER AND REMOVE THE FRONT PANEL



OPTIONAL FANS INSTALLATION ON THE FRONT PANEL



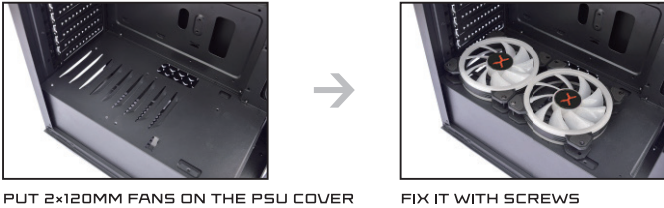
FAN INSTALLATION ON THE REAR



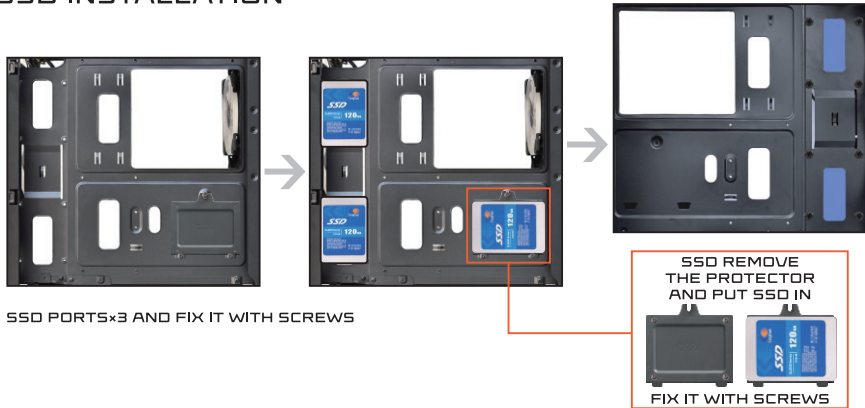
OPTIONAL FANS INSTALLATION ON THE TOP



OPTIONAL FANS INSTALLATION ON THE PSU COVER



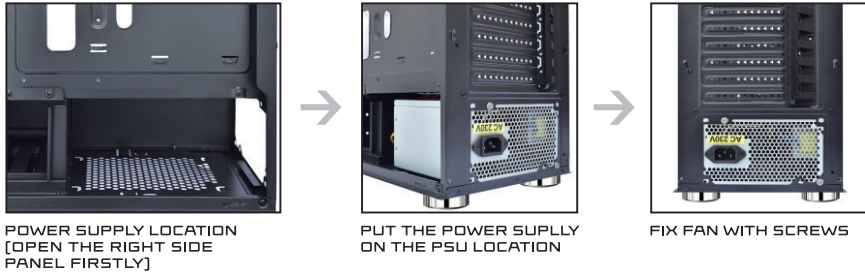
2.5" SSD INSTALLATION



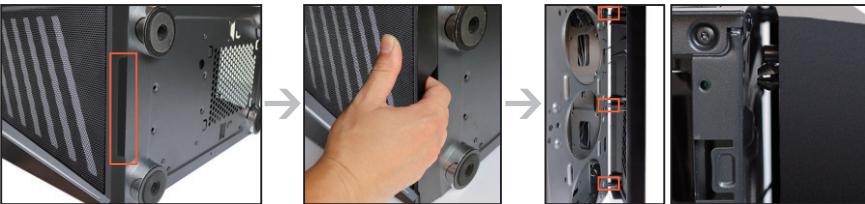
3.5" HDD INSTALLATION



POWER SUPPLY INSTALLATION



HOW TO REMOVE FRONT PANEL



USB 3.0 INSTALLATION



RGB STRIP LIGHT AND FAN CONNECTION

