

# VORTEX

KRX0094



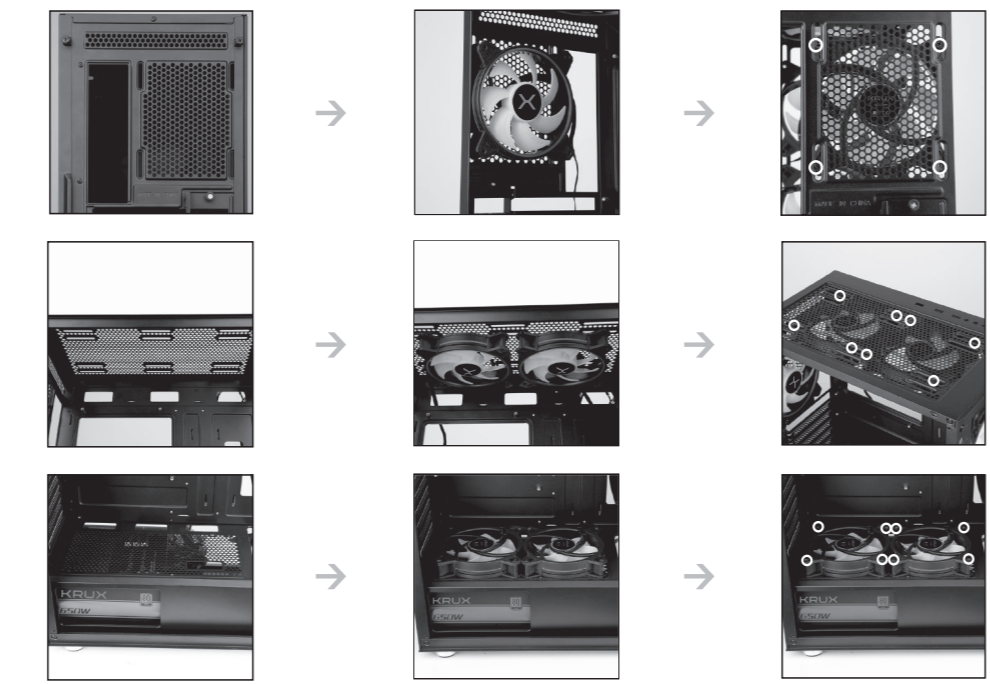
Recommended air flow.

WWW.KRUX.TECH

FANS ASSEMBLING:  
 REAR: 1x 120 MM [OPTIONAL]  
 TOP: 2x 120 MM / 2x 140 MM [OPTIONAL]  
 FRONT: 2x 200 MM [INCLUDED] /  
 3x 120 MM [OPTIONAL]

2022.11.16

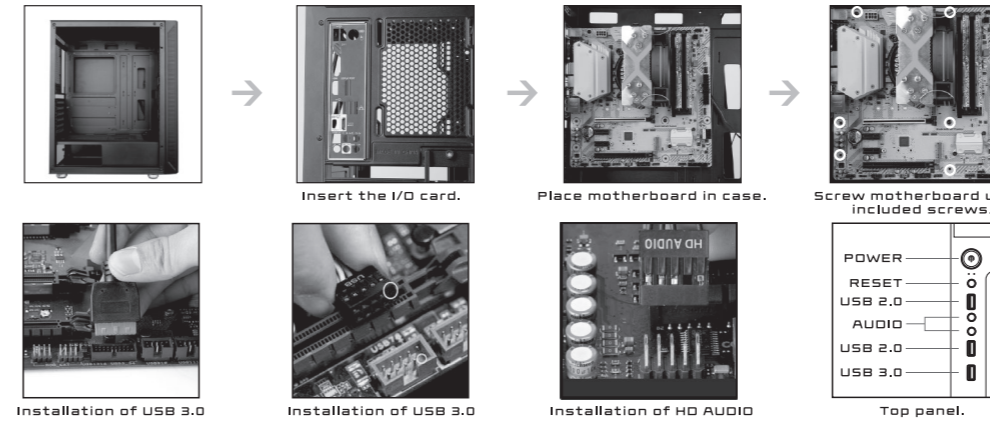
## FANS ASSEMBLING [OPTIONAL]



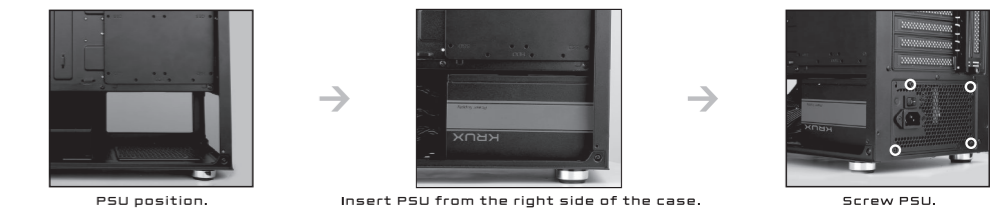
## FANS ASSEMBLING [OPTIONAL]



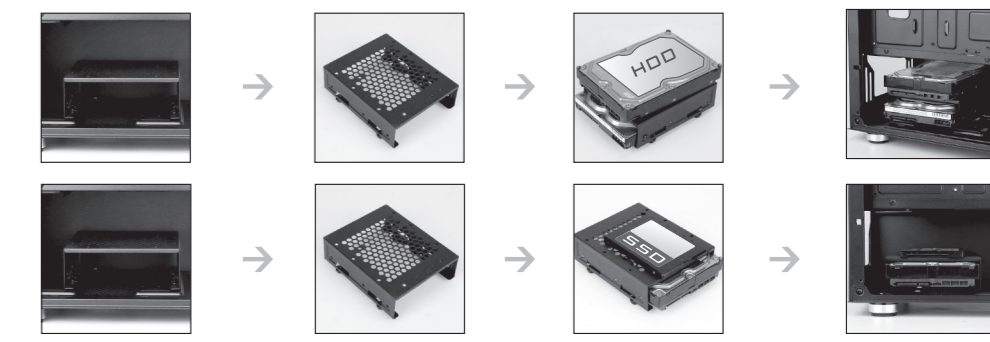
## MOTHERBOARD ASSEMBLING



## PSU ASSEMBLING



## 3.5" HDD / 2.5" SSD ASSEMBLING



### ACCESSORIES

x8 CABLE TIES	x1 SPEAKER	x1 COVER OF COPPER CYLINDER
x17 M/B SCREWS / SSD SCREWS	x6 PSU SCREWS	x8 HDD SCREWS
	x3 COPPER CYLINDER	

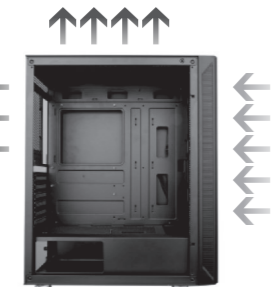
CE RoHS COMPLIANT MADE IN CHINA

ENTITY RESPONSIBLE /  
 PODMIOT ODPOWIEDZIALNY:  
 COOLING SP. Z O.O.  
 UL. SOKOŁOWSKA 24  
 05-806 SOKOŁÓW, POLSKA  
 TEL. +48 22 292 01 30  
 BUD. 00002025

WWW.KRUX.TECH

# VORTEX

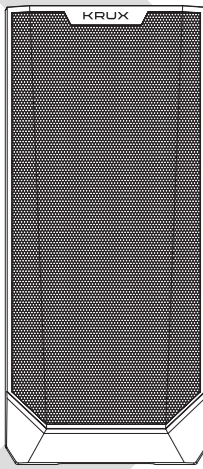
## KRX0094



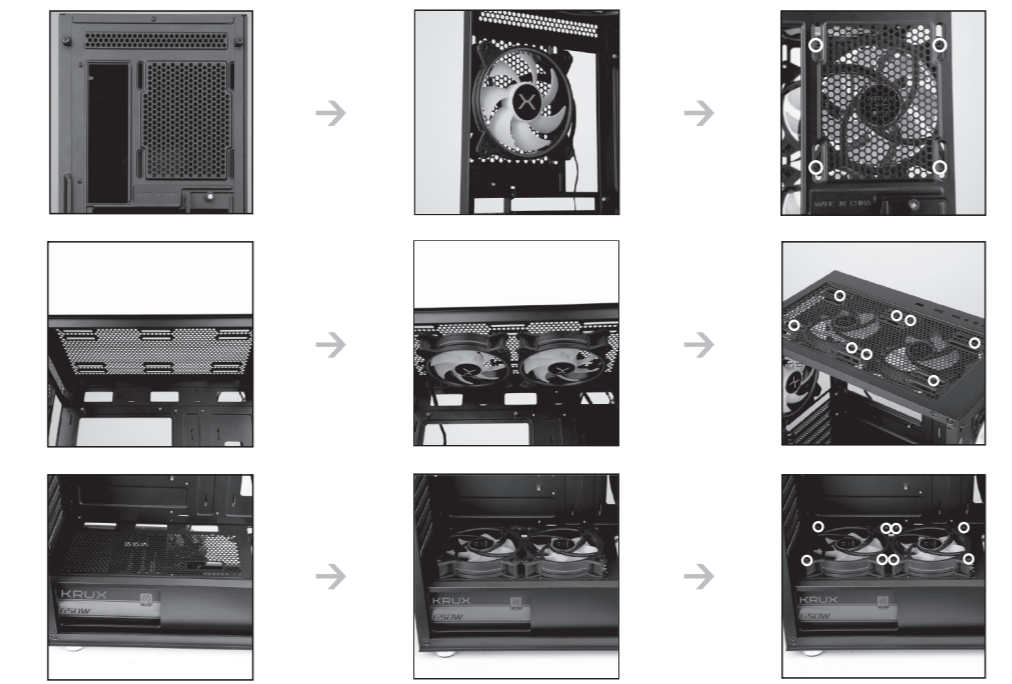
Rekomendowane ustawienie przepływu powietrza.

WWW.KRUX.TECH

WENTYLATORY:  
TYŁ: 1x 120 MM [DODATKOWE]  
GÓRA: 2x 120 MM / 2x 140 MM [DODATKOWE]  
PRZÓD: 2x 200 MM [W ZESTAWIE] /  
3x 120 MM [DODATKOWE]



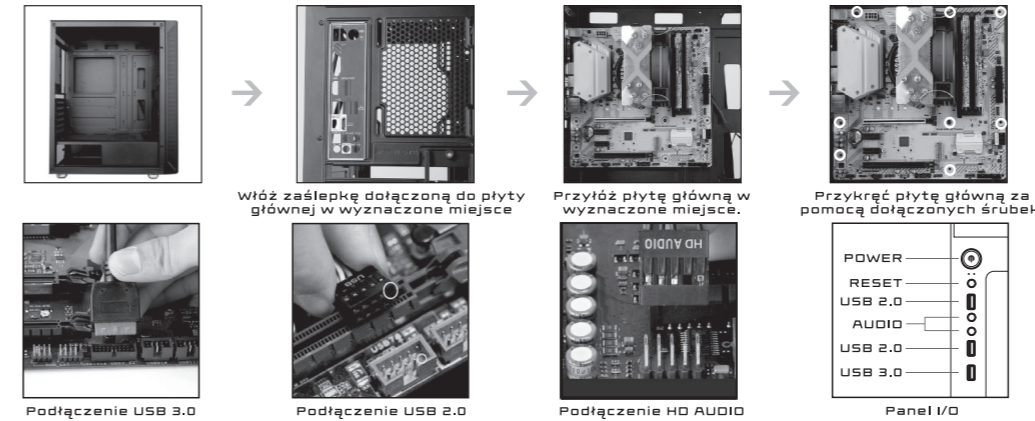
### MONTAŻ WENTYLATORÓW [DODATKOWE]



### MONTAŻ WENTYLATORÓW [DODATKOWE]



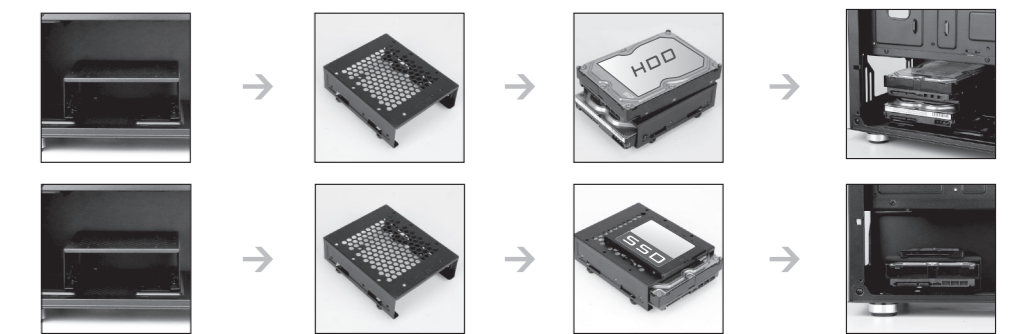
### MONTAŻ PŁYTY GŁÓWNEJ



### MONTAŻ ZASILACZA



### MONTAŻ DYSKÓW 3.5" HDD / 2.5" SSD



### AKCESORIA

