

OoYS

KRX0097



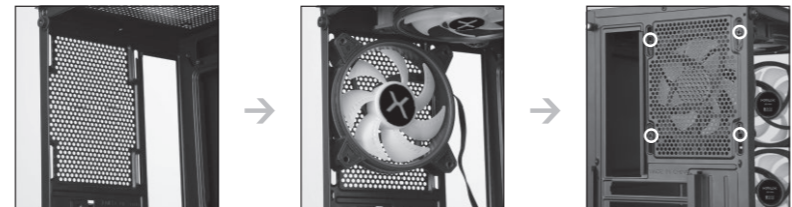
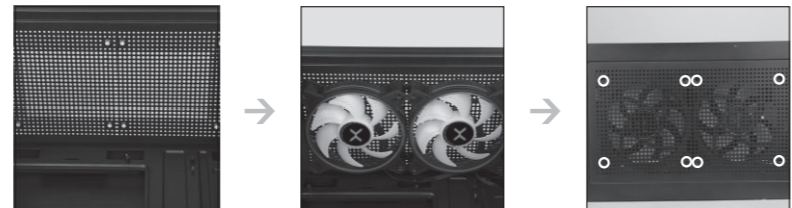
Recommended air flow.

REAR: 1x 120 MM [INCLUDED]
FRONT: 3x 120 MM [OPTIONAL]
TOP: 2x 120 MM [OPTIONAL]

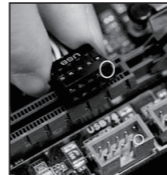
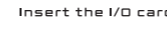
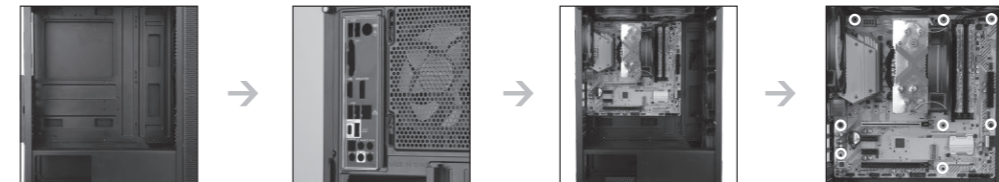
WWW.KRUX.TECH

2021.04.08

FANS ASSEMBLING [OPTIONAL]



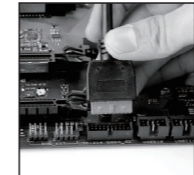
MOTHERBOARD ASSEMBLING



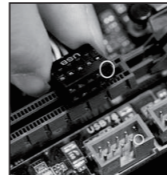
Insert the I/O card.

Place motherboard in case.

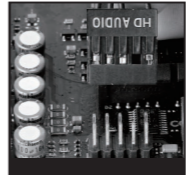
Screw motherboard using included screws.



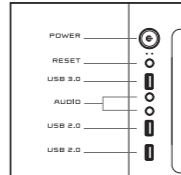
Installation of USB 3.0



Installation of USB 3.0



Installation of HD AUDIO



Top panel.

PSU ASSEMBLING



PSU position.

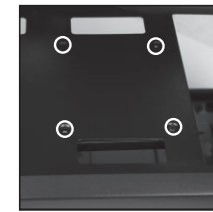
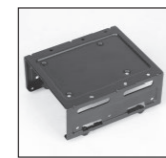


Insert PSU from the right side of the case.



Screw PSU.

3.5" HDD / 2.5" SSD ASSEMBLING



ACCESSORIES



M/B SCREWS /
SSD SCREWS



PSU SCREWS



HDD SCREWS



COPPER CYLINDER



CABLE TIES

WWW.KRUX.TECH

ODYS KRX0097



Rekomendowane ustawienie przepływu powietrza.

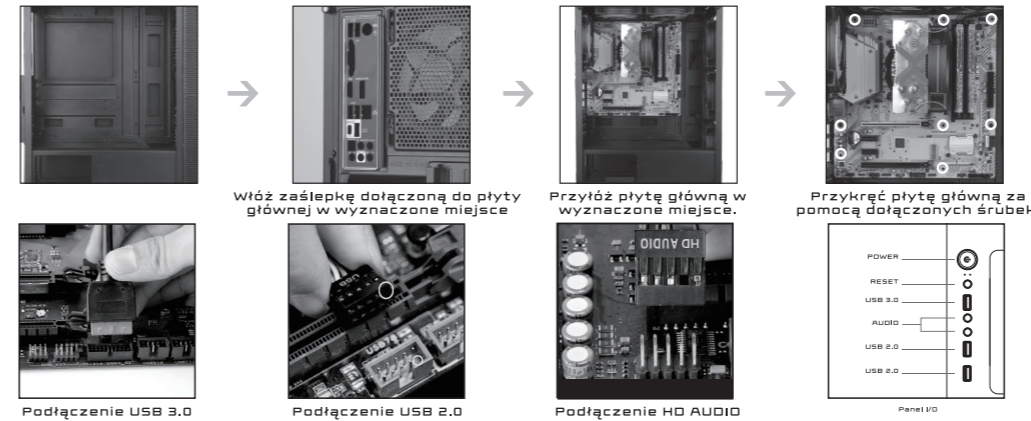
WWW.KRUX.TECH

TYŁ: 1x 120 MM [W ZESTAWIE]
PRZÓD: 3x 120 MM [ODDATKOWE]
GÓRA: 2x 120 MM [ODDATKOWE]

MONTAŻ WENTYLATORÓW



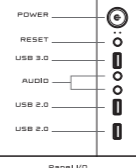
MONTAŻ PŁYTY GŁÓWNEJ



Podłączenie USB 3.0

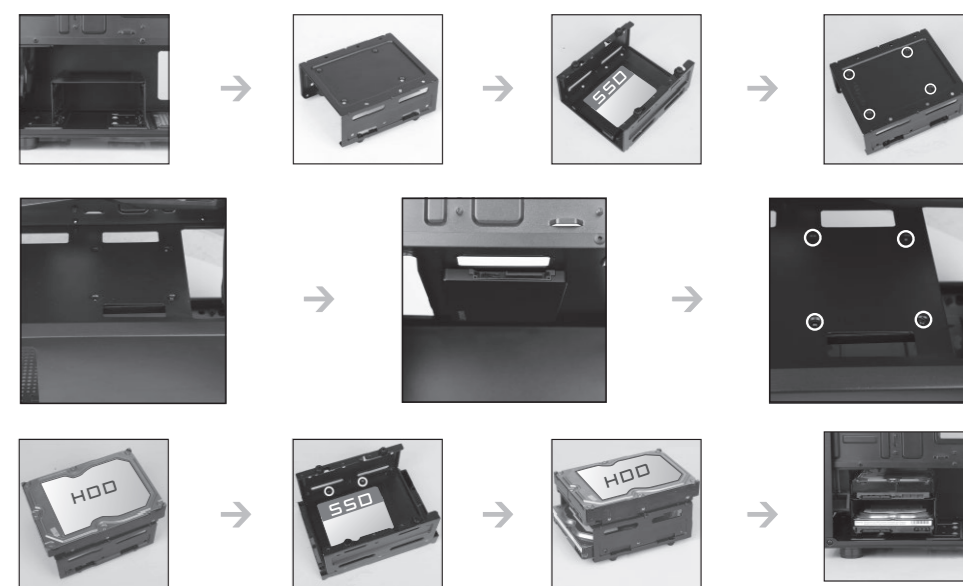
Podłączenie USB 2.0

Podłączenie HD AUDIO



Panel I/O

MONTAŻ DYSKÓW 3.5" HDD / 2.5" SSD



AKCESORIA



ŚRUBY DO PŁYTY
GŁÓWNEJ ORAZ
DYSKÓW SSD

ŚRUBY DO
ZASILACZA

ŚRUBY DO
DYSKÓW HDD

DYSTANSE DO
PŁYTY GŁÓWNEJ

OPASKI ZACISKOWE

MONTAŻ ZASILACZA



Miejsce na zasilacz.

Włóż zasilacz z prawej strony obudowy.

Przykręć zasilacz za pomocą śrubek.

WWW.KRUX.TECH